

Introducing our new Tri-Comp Console design for off-highway equipment.



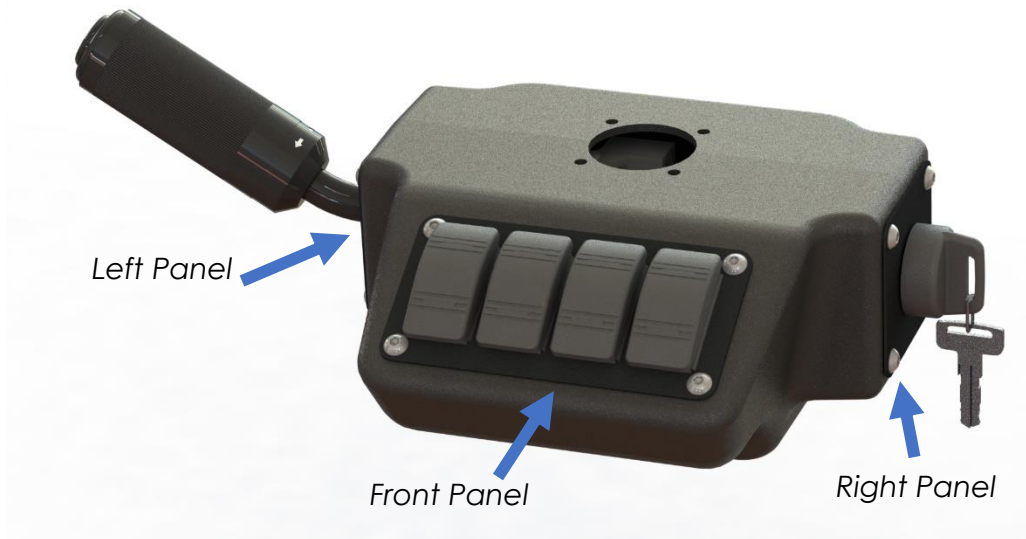
Applications:

- De-clutter dash panels to create a clear line-of-sight.
- Ergonomic control of critical electronic functions.
- Compact and flexible design for any application.

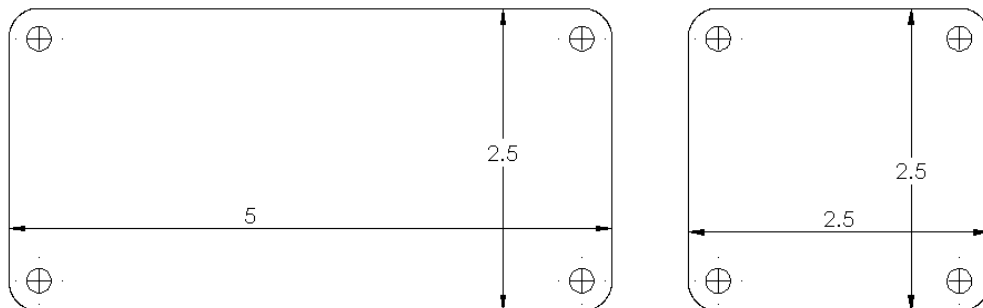
Tri-Comp Console Specifications:	
Requirements	Available with all columns currently offered with at least 8.5 inches in overall or above pivot length. Very common on tilt and floor tilt models.
Rough Dimensions	8" Wide x 8.5" Deep x 4" Tall
Materials	Kydex high performance thermoplastic offering unsurpassed resistance and durability. Fire and chemical resistant.
Mounting	Robust, internal welded brackets suitable for all environments.
Customizable	Various options to add shifters, switches, or touch pads based on equipment requirements. Can be delivered assembled with completed column and cable assemblies for direct installation to your equipment.

CAD Drawings available on request.

Options	
Front Panel	4 Customizable Rocker Switch knockouts 8 Panel CANbus keypad knockout Other touch pad options to fit requirements
Left/Right Panel	Shifter knockout Ignition switch knockout Other options to fit requirements
Other	Cutouts for indicators per spec Ability to customize to your needs



Panel Sizes



Forward/Neutral/Reverse (FNR) Shifters

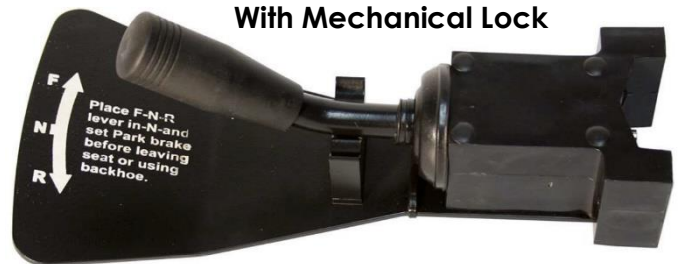
Options	
Mounting	Left or Right
Column Size	1.5" and 1.75" Diameter
Neutral Lock	None or drop-down lock
Speeds	2, 3, 4, and 6
Buttons	Horn, Wash or Kick-down
Connector	Deutsch or spec'd

Specifications	
Expected Life Cycle	500,000 hrs
Expected Lever Life Cycle	1 million or 3 million with drop-down neutral lock
Operating Temperature	-40°F to 185°F
Operating Voltage	1v to 48v
Vibration	Up to 60Hz
Solenoid Load	3A at 12.8v with arc suppression
Handle Dead Weight Limit	160 lbf

Simple FNR Shifter



**Simple FNR Shifter
With Mechanical Lock**



FNR Shifter with Horn



**Multi Speed FNR Shifter
with Horn**



CAD Drawings and Wiring Diagrams available on request.

Turn Signal Indicator (TSI)

Options	
Mounting	Left or Right
Column Size	1.5" and 1.75" Diameter
Wash/Wipe	1 speed, high/low, intermittent, and wash
Lights/Buttons	Turn Signal, Head Lamp-Beam/Dipped/Flash, Hazard Warning, Horn, or Wash
Buttons	Horn, Wash or Kick-down
Connector	Deutsch or spec'd

Specifications	
Expected Life Cycle <i>Based on 12v testing</i>	Turn Signal-100k hrs (8A) Wiper: 50k hrs (2A) Washer 20k hrs (2A) Lamp Dimmer: 20k hrs (15A)
Operating Temperature	-40°F to 185°F
Operating Voltage	1v to 48v
Vibration	Up to 60Hz
Solenoid Load	3A at 12.8v with arc suppression
Handle Dead Weight Limit	160 lbf

Combination Shifter



Turn Signal Switch



CAD Drawings and Wiring Diagrams available on request.